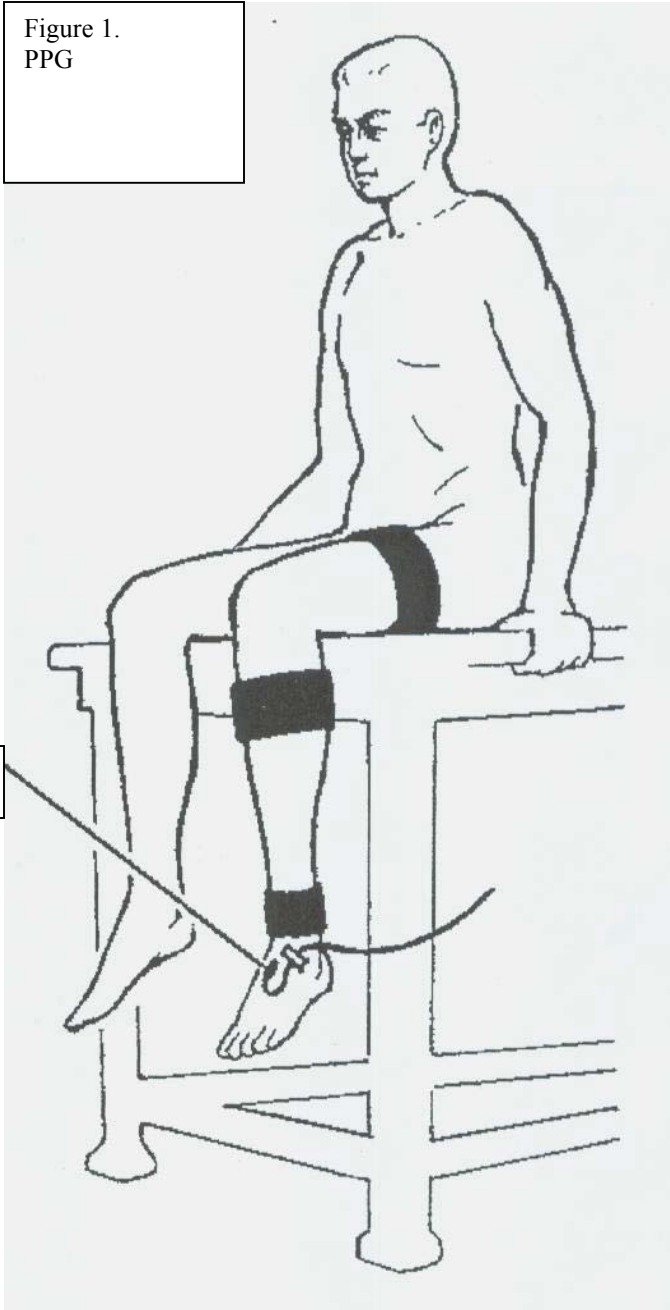


Article 2

Diagnostic Testing

All testing is done on-site at Gastonia Surgical's ICAVL-certified vascular laboratory. Photoplethysmography or PPG, is a simple noninvasive test utilizing a special sensor which can detect volume changes in the legs. This sensor is used in conjunction with simple blood-pressure cuffs as a quick screening test for venous insufficiency (see figure 1). If insufficiency is detected, a venous duplex ultrasound examination is performed (see figure 2). This also is noninvasive, but is more time consuming than the PPG. The Duplex exam gives precise, detailed information about the individual veins within the leg. This information is vital to the physician in developing a patients treatment plan. Duplex is also used as part of the follow-up process after several procedures.

Figure 1.
PPG



PPG Sensor

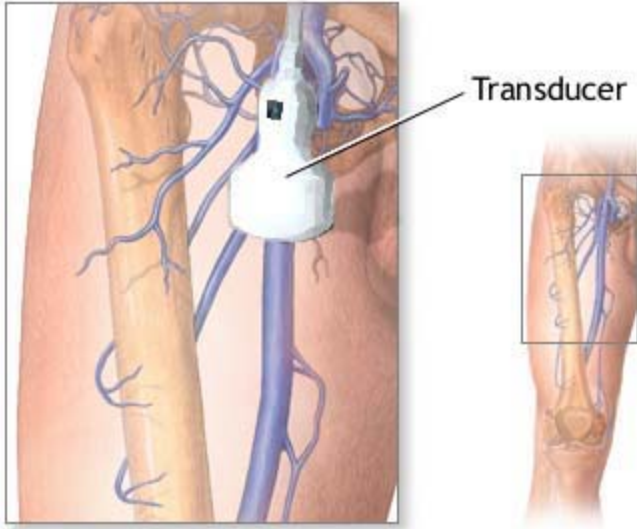


Figure 2.
Duplex ultrasound